

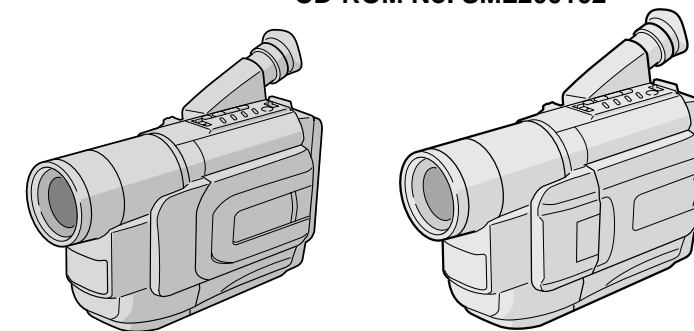
# JVC

## SCHEMATIC DIAGRAMS

### CAMESCOPE COMPACT VHS

# GR-SX17EG, SXM27EG, SXM307EG

CD-ROM No. SML200102



**S-VHS** VHS  
PAL  
625

*Super VHS*  
*Super VHS ET*

Regarding service information other than these sections, refer to the GR-SXM607EG service manual (No. 86589). Also, be sure to note important safety precautions provided in the service manual.

### CARACTERISTIQUES TECHNIQUES

#### Camescope

##### Général

**Format** : Standard S-VHS/VHS PAL  
**Alimentation** : 11 V CC  $\overline{\text{---}}$  (En utilisant l'adaptateur secteur)  
 6 V CC  $\overline{\text{---}}$  (En utilisant la batterie)  
**Consommation**  
**Viseur allumé** : 4,0 W (GR-SXM307/SXM27 uniquement)  
 3,7 W (GR-SX17 uniquement)  
**Écran LCD\* allumé** : 4,5 W (GR-SXM307/SXM27 uniquement)  
**Torche vidéo\*\*** : 3,0 W

\* Modèles disposant d'un écran LCD uniquement.  
\*\* GR-SXM307 uniquement.

**Système de signal** : Type PAL  
**Système d'enregistrement vidéo**  
**Luminance** : Enregistrement FM  
**Couleur** : Enregistrement direct de sous-porteuse convertie  
 Conforme au standard VHS

**Cassette**  
**Vitesse de bande**  
 SP : 23,39 mm/s  
 LP : 11,70 mm/s  
**Durée maximale d'enregistrement**  
 SP : 60 mn  
 LP : 120 mn (avec une cassette EC-60)

**Température de fonctionnement** : 0°C à 40°C

**Humidité de fonctionnement** : 35% à 80%  
**Température de stockage** : -20°C à 50°C  
**Poids** : Environ 900 g (GR-SXM307 uniquement)  
 Environ 910 g (GR-SXM27 uniquement)  
 Environ 730 g (GR-SX17 uniquement)  
**Dimensions (L x H x P)** : 200 mm x 112 mm x 118 mm (GR-SXM307/SXM27 uniquement)  
 200 mm x 112 mm x 115 mm (GR-SX17 uniquement)  
 (avec l'écran LCD\* fermé et le viseur complètement incliné vers le bas)

\* Modèles disposant d'un écran LCD uniquement.

**Capteur** : CCD de 1/4"  
**Objectif** : F1,6, f = 3,9 mm à 62,4 mm, zoom électrique 16:1 avec commande de diaphragme automatique et commande macro, diamètre du filtre 40,5 mm

**Viseur** : Viseur électronique avec tube à rayons cathodiques noir et blanc de 0,5"  
**Réglage de la balance des blancs** : Automatique/manuel  
**Écran LCD** : 2,5" mesuré en diagonale, écran LCD/matrice active TFT (GR-SXM307/SXM27 uniquement)

**Haut-parleur** (modèles disposant d'un écran LCD uniquement) : Monophonique

#### Connecteurs

**JLIP/EDIT** :  $\varnothing$ 3,5 mm, 4 pôles, prise mini tête (compatible avec la fiche RC-5325)  
**Vidéo** : 1 Vcc, 75  $\Omega$  asymétrique, sortie analogique (via la prise de sortie vidéo)  
**Audio** : 300 mV (rms), 1 k $\Omega$ , sortie analogique (via la prise de sortie audio)  
**S-Vidéo** : Y : 1 Vcc, 75  $\Omega$ , sortie analogique  
 C : 0,29 Vcc, 75  $\Omega$ , sortie analogique

#### Adaptateur secteur AP-V10EG

**Alimentation** : CA 110 V à 240 V~, 50 Hz/60 Hz  
**Sortie** : CC 11 V  $\overline{\text{---}}$ , 1 A  
**Dimensions (L x H x P)** : 59 mm x 31 mm x 84 mm  
**Poids** : Environ 140 g (cordon secteur non compris)

#### Accessoires en option

- Batterie BN-V12U, BN-V20U, BN-V400U
- Cassettes compactes S-VHS (**S-VHS**) SE-C45/30
- Cassettes compactes VHS (**VHS**) EC-60/45/30
- Sac de transport CB-V7U
- Adaptateur de cassette C-P7U

Certains accessoires ne sont pas disponibles dans certaines régions. Veuillez consulter votre revendeur JVC le plus proche avant d'acheter des accessoires en option.

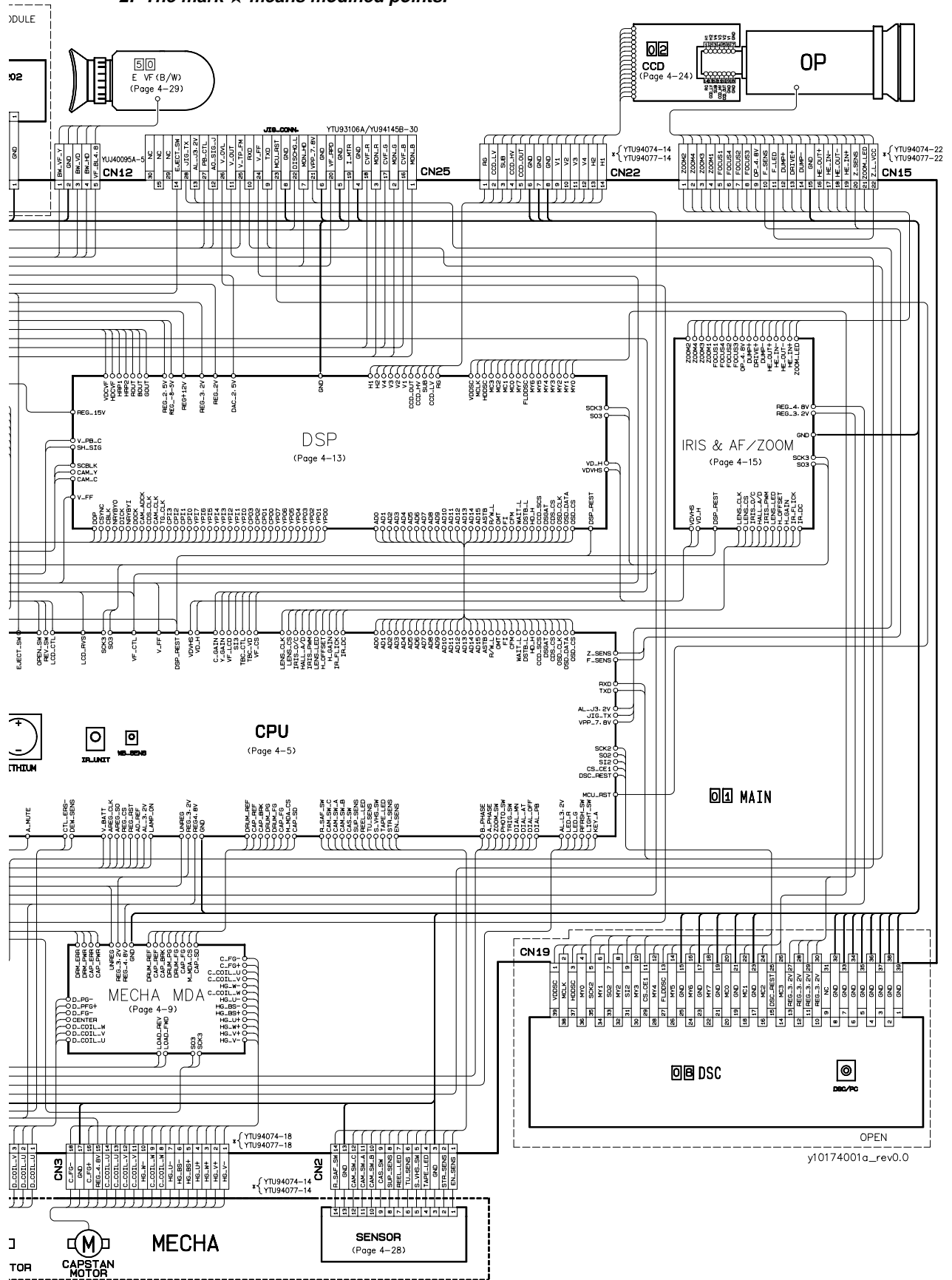
# JVC

VICTOR COMPANY OF JAPAN, LIMITED  
VIDEO DIVISION

S40894



**Note 1: How to find the page showing the continuative schematic diagram**  
**Example) TO DSP (Page 4-13): Refer to the GR-FXM37EG, SXM607EG/EK service manual (No. 86589)**  
**TO REG (Page 4-3): Refer to this service manual**  
**2: The mark ★ means modified points.**



E F G H

## 4.2 REGULATOR SCHEMATIC DIAGRAM

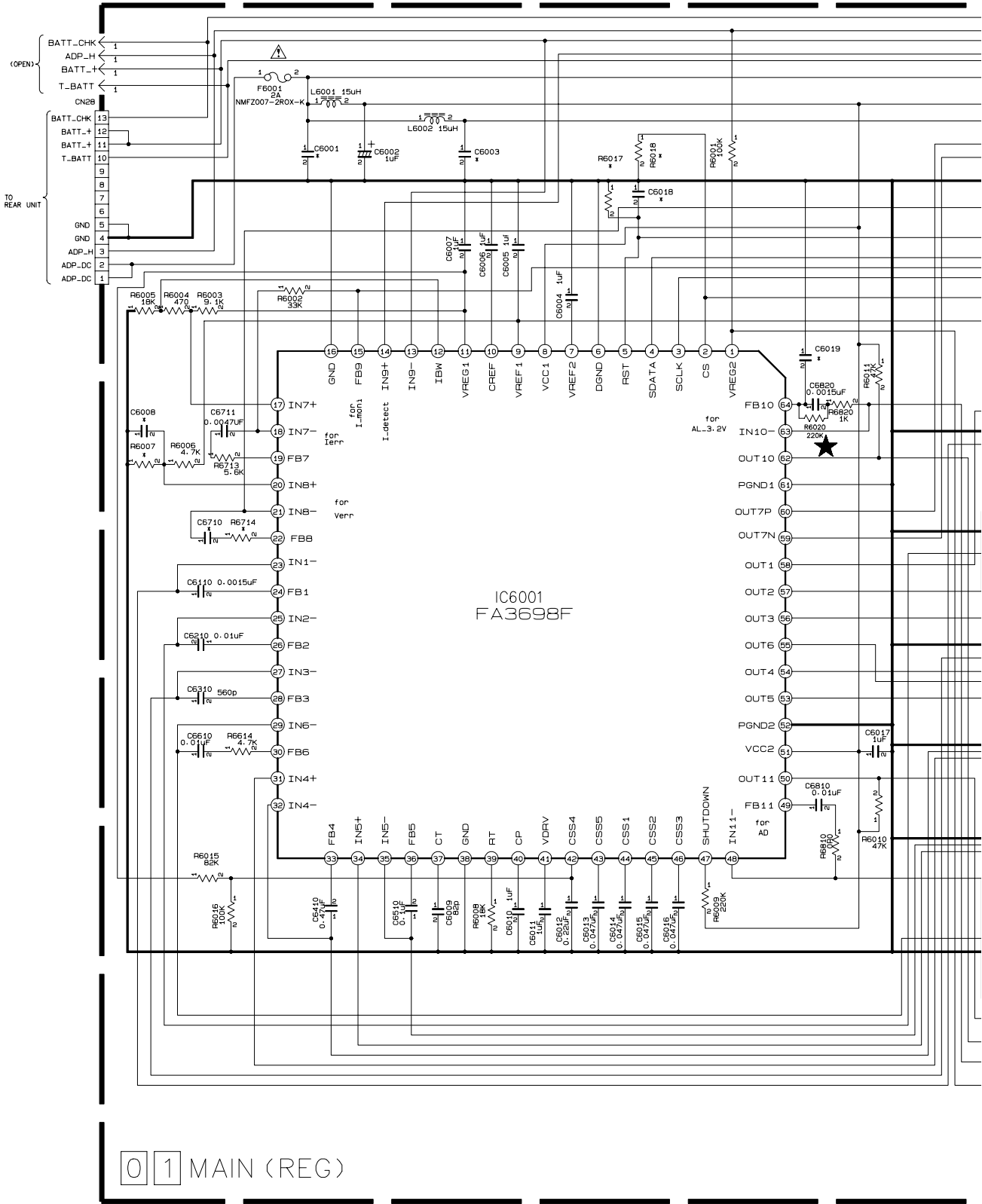
5

4

3

2

1



NOTE : THE PARTS WITH MARKED (\*) IS NOT USED.

EXCHANGE LIST

1- LIGHT YES OR NO

LIGHT	YES	NO
Q6306	exist	open
L6306	exist	open
C6307	exist	open
R6306-6307	exist	open

2- LCD YES OR NO

LCD	YES	NO
Q6307-6308	exist	open
R6309-6311	exist	open
C6308	exist	open
R6312	open	OR0

3- CCD VOLTAGE

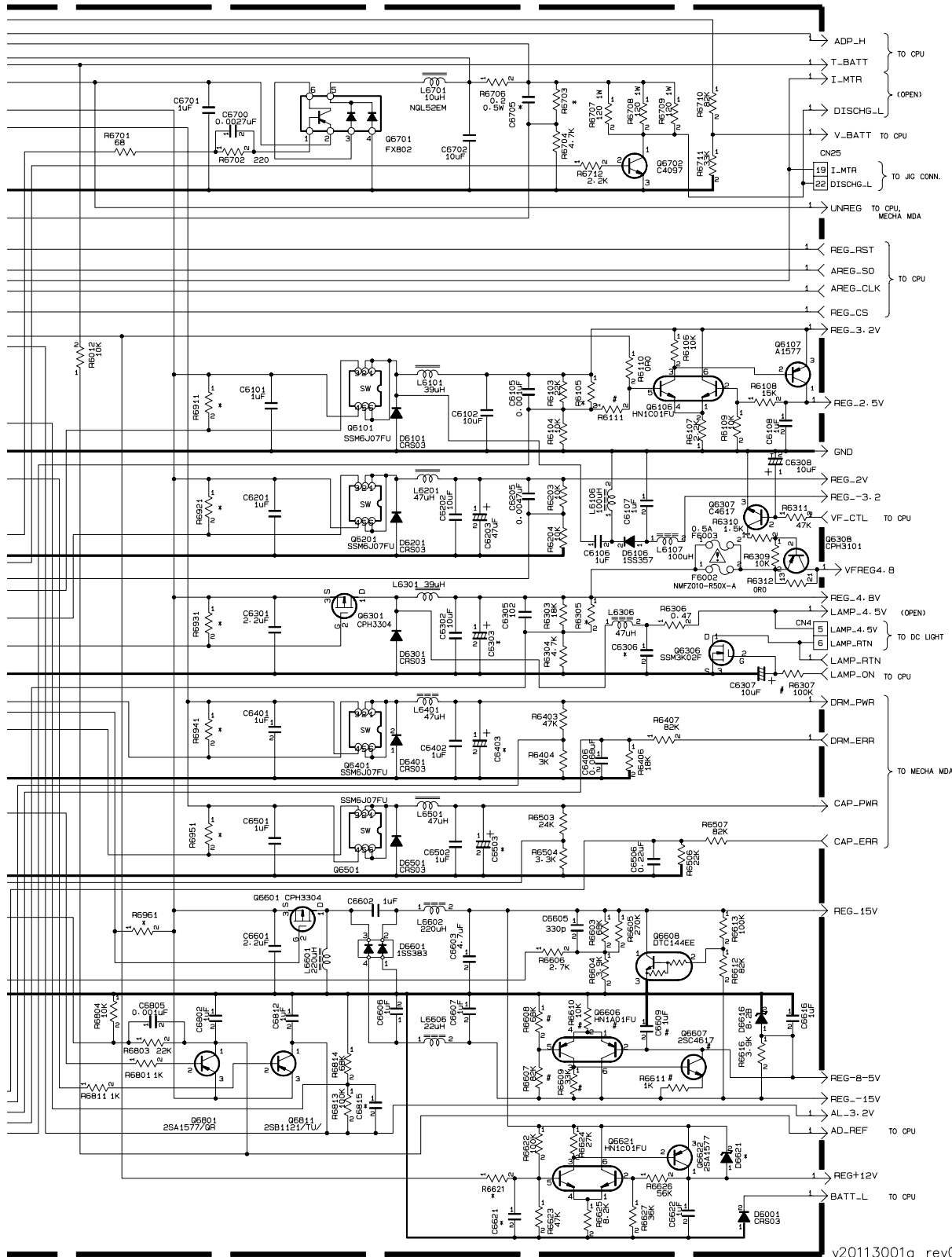
ccd voltage picture elements memory	PAL		NTSC
	LOW	others	
D6616	B.2V	5.1V	B.2V

A

B

C

D



y20113001a\_rev0.0

E

F

G

H

# 4.3 LCD CTL SCHEMATIC DIAGRAM

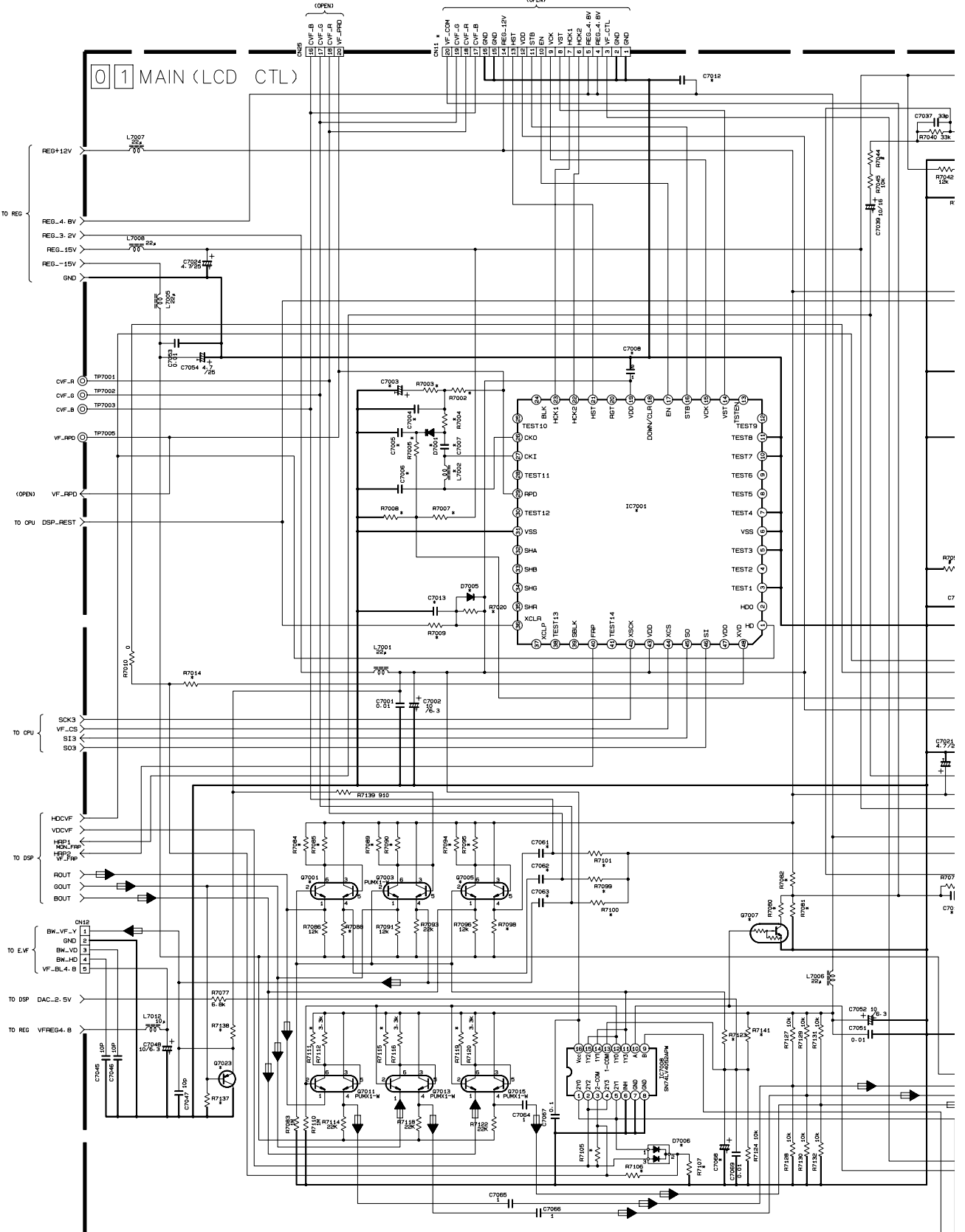
5

4

3

2

1



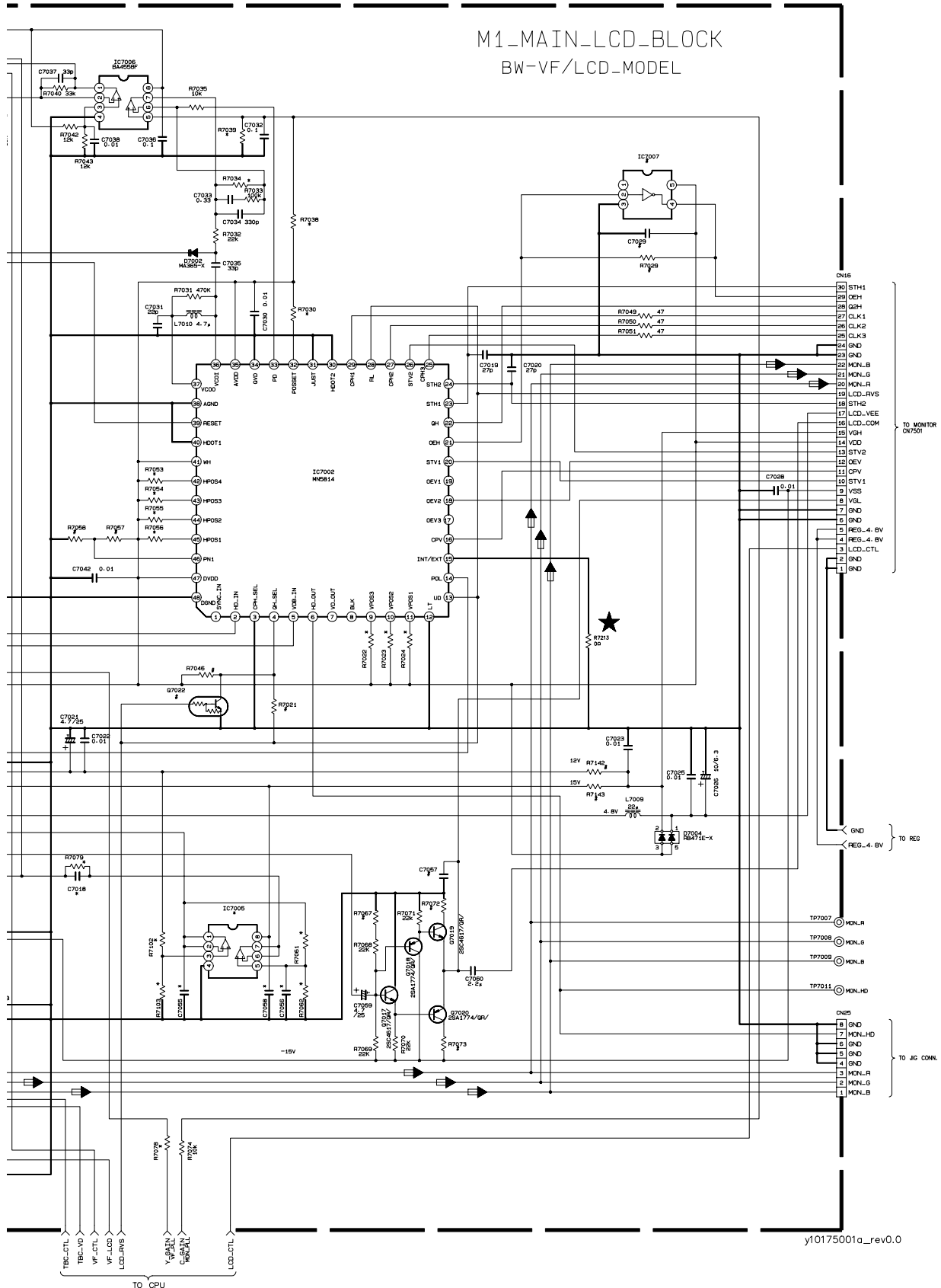
NOTE: THE PARTS WITH MARKED (\*) IS NOT USED.

EXCHANGE PARTS LIST													
	TC7007	Q7022	R7021	R7029	R7044	R7046	R7067	R7072	R7073	R7142	R7143	C7029	C7057
2.51inch	TC7504FU	DTCL44EE	*	*	7.5K	10K	22K	1.8K	330	*	0	0.1	5800P
31inch	*	*	0	0	4.3K	*	6.8K	1.2K	820	0	*	*	*

	R7057	R7058
NTSC	*	0
PAL	0	*

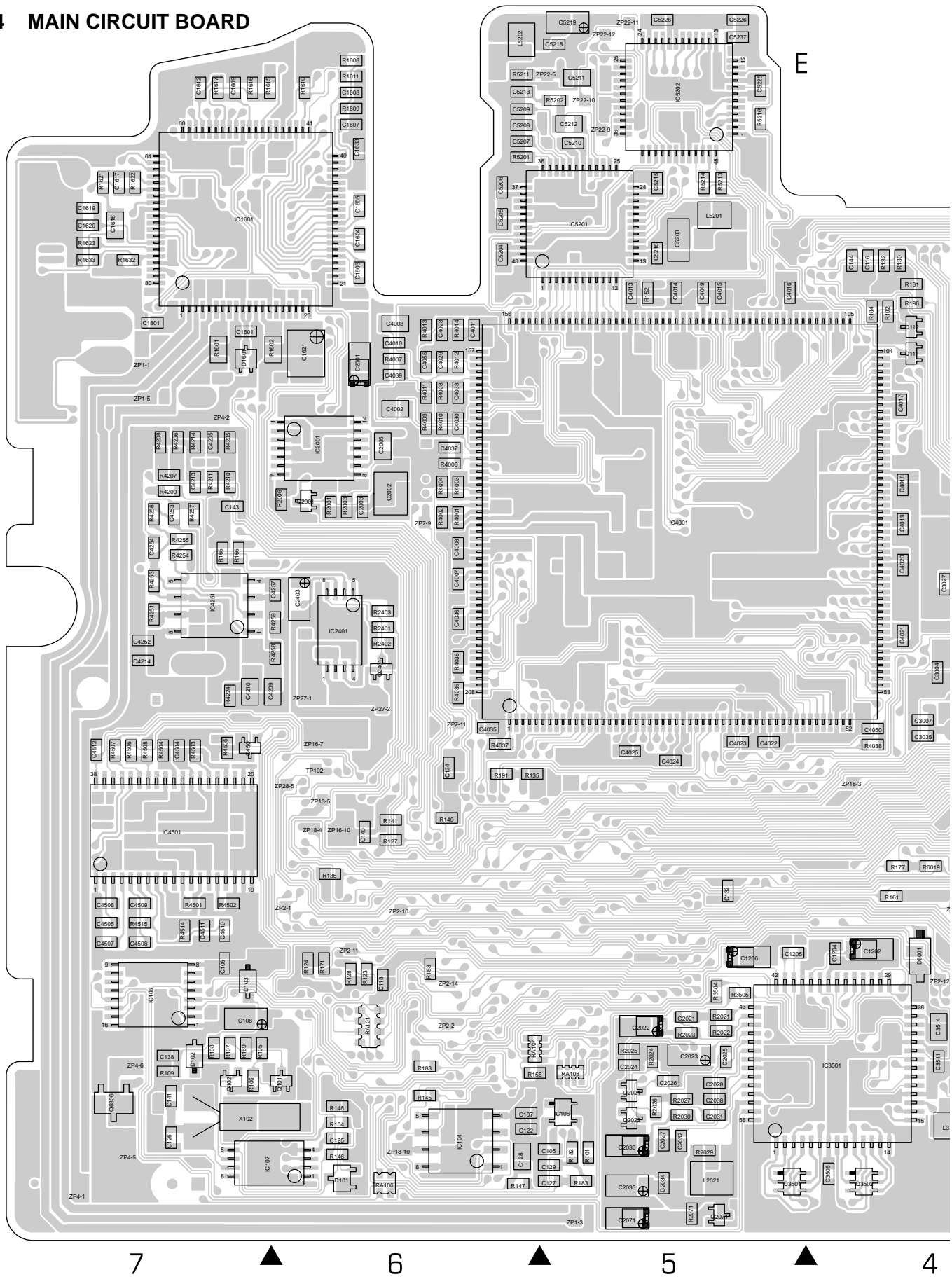
A B C D

M1\_MAIN\_LCD\_BLOCK  
 BW-VF/LCD-MODEL



y10175001a\_rev0.0

# 4.4 MAIN CIRCUIT BOARD



7

6

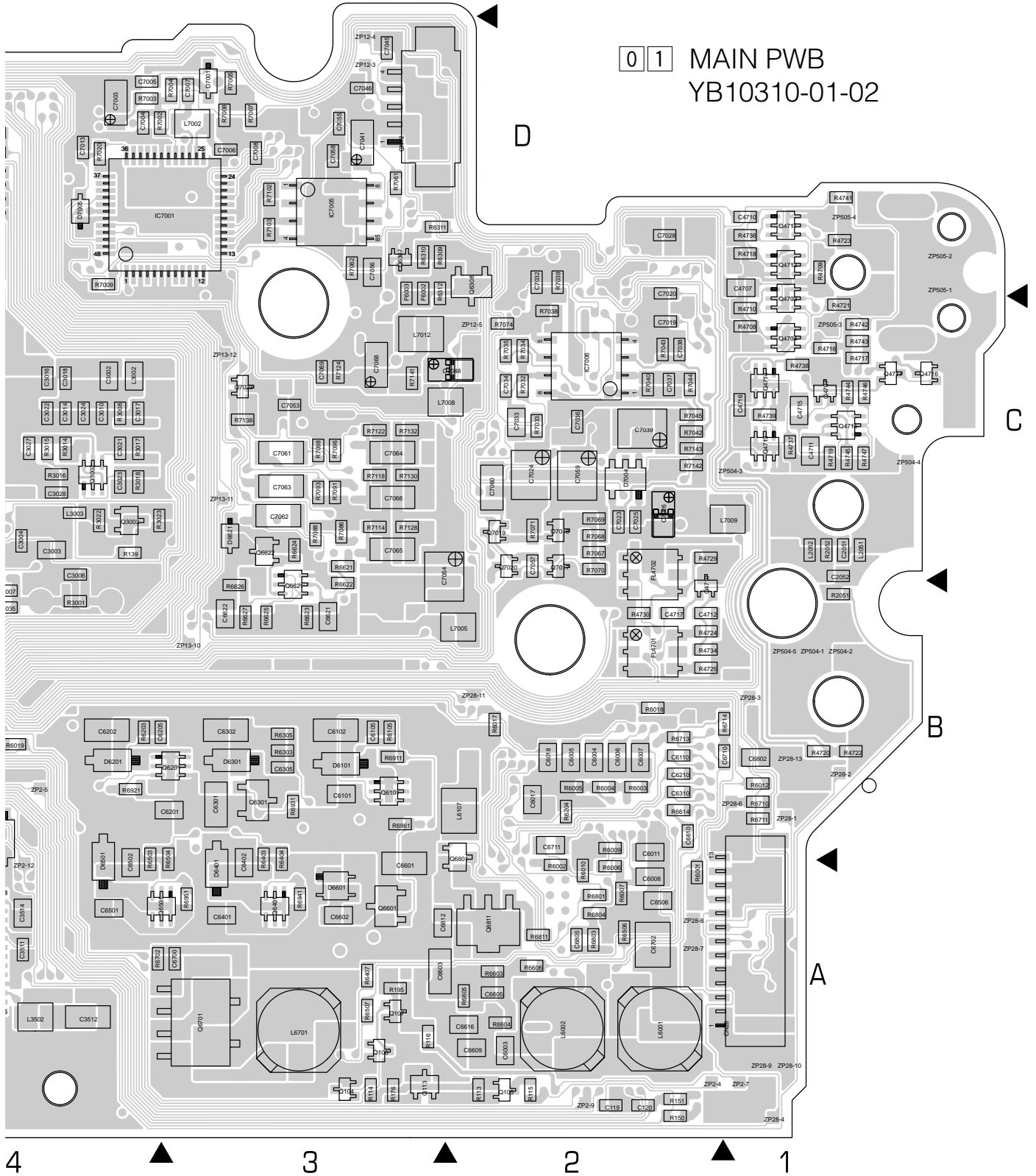
5

4



FOIL SIDE (B)

0 1 MAIN PWB  
YB10310-01-02

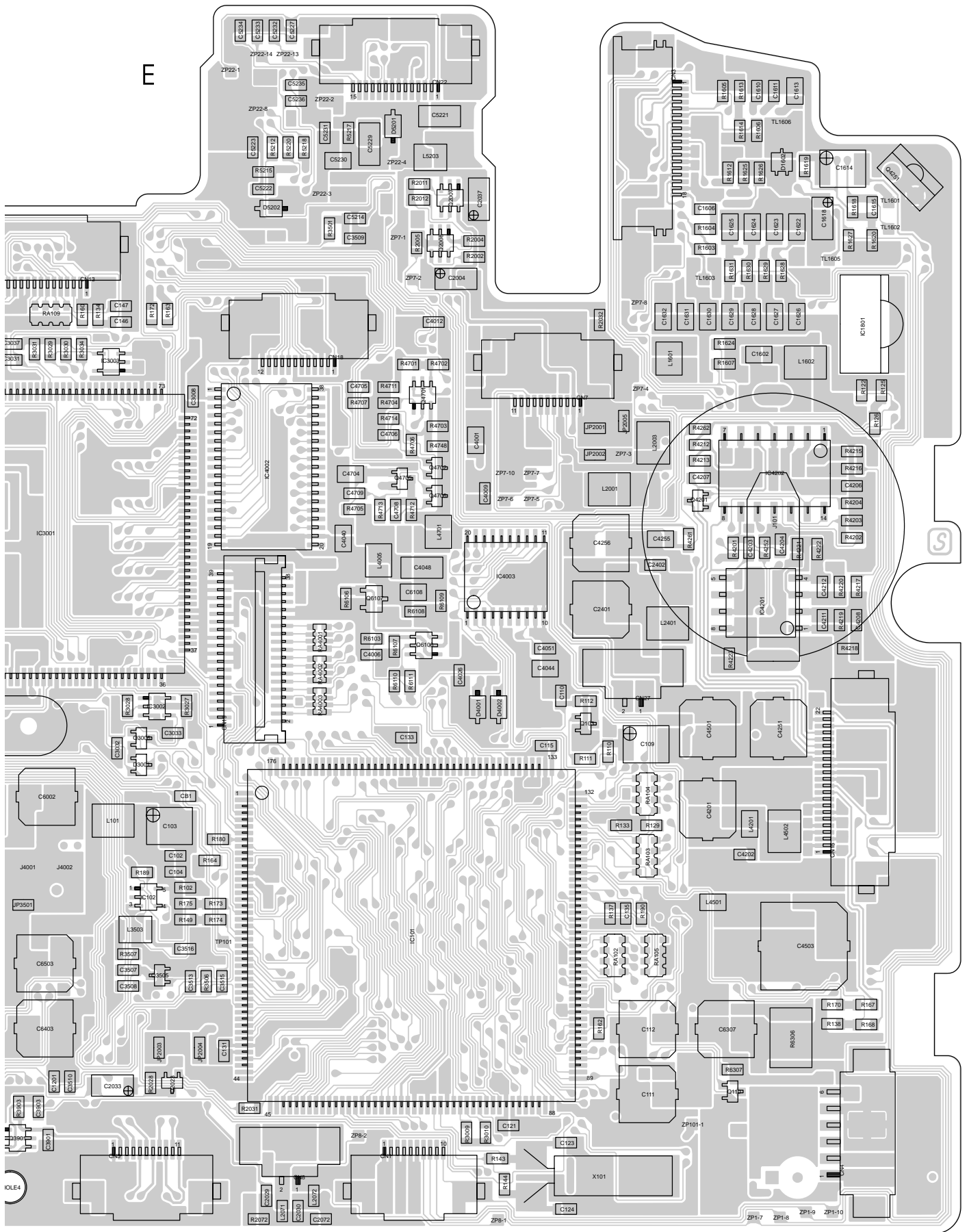


### COMPONENT PARTS LOCATION GUIDE (MAIN)

REF.No.	LOCATION	REF.No.	LOCATION	REF.No.	LOCATION	REF.No.	LOCATION	REF.No.	LOCATION	REF.No.	LOCATION	REF.No.	LOCATION	REF.No.	LOCATION					
<b>CAPACITOR</b>																				
C102	A C	5B	C2030	A C	5A	C4044	A C	6C	C6006	B C	2B	C7037	B C	2C	IC3002	A C	4B	Q3501	B C	5A
C103	A C	4B	C2031	B C	5A	C4048	A C	5C	C6007	B C	2B	C7038	B C	2C	IC3003	A C	4D	Q3502	B C	4A
C104	A C	5B	C2032	B C	5A	C4049	B C	5D	C6008	B C	2A	C7039	B C	2C	IC3501	B C	4A	Q3505	A C	4A
C105	B C	5A	C2033	A C	4A	C4050	B C	4B	C6009	A C	2A	C7041	B C	3D	IC4001	B C	5C	Q3901	A C	4A
C106	B C	7B	C2034	B C	5A	C4051	A C	6C	C6010	A C	2A	C7042	A C	2C	IC4002	A C	5C	Q4201	A C	6C
C107	B C	6A	C2035	B C	5A	C4055	B C	6D	C6011	B C	2B	C7045	B C	3D	IC4003	A C	6C	Q4251	A D	7D
C108	B C	7A	C2036	B C	5A	C4201	A C	7B	C6012	A C	2A	C7046	B C	3D	IC4201	A C	7C	Q4501	B C	7B
C109	A C	6B	C2037	A C	6D	C4202	A C	7B	C6013	A C	2A	C7047	A C	3D	IC4202	A C	7C	Q4701	A C	5D
C110	A C	6C	C2038	B C	5A	C4203	A C	7C	C6014	A C	2A	C7048	B C	2C	IC4251	B C	7C	Q4702	A C	6C
C111	A C	6A	C2051	B C	1C	C4204	A C	7C	C6015	A C	2A	C7051	A C	2C	IC4501	B C	7B	Q4703	B C	1C
C112	A C	6A	C2052	B C	1C	C4205	B C	7C	C6016	A C	2A	C7052	A C	2C	IC4702	A C	2B	Q4704	B C	1C
C113	A C	4D	C2071	B C	5A	C4206	A C	7C	C6017	B C	2B	C7053	B C	3C	IC5201	B C	5D	Q4705	A C	5C
C114	A C	4D	C2072	A C	5A	C4207	A C	7C	C6018	B C	2B	C7054	B C	3C	IC5202	B C	5E	Q4706	A C	6C
C115	A C	6B	C2401	A C	6C	C4208	A C	7C	C6101	B C	3B	C7055	B C	3D	IC6001	A C	2B	Q4707	B C	1C
C116	B C	4D	C2402	A C	6C	C4209	B C	7C	C6102	B C	3B	C7056	B C	3D	IC7001	B C	4D	Q4708	A C	2C
C118	B C	6A	C2403	B C	6C	C4210	B C	7C	C6105	B C	3B	C7057	B C	2C	IC7002	A C	2C	Q4709	A C	2B
C119	B C	2A	C3002	B C	4C	C4211	A C	7C	C6106	A C	2B	C7058	B C	3D	IC7005	B C	3D	Q4710	B C	2B
C120	B C	2A	C3003	B C	4C	C4212	A C	7C	C6107	A C	3B	C7059	B C	2C	IC7006	B C	2C	Q4711	B C	1D
C121	A C	6A	C3004	B C	4C	C4213	B C	7C	C6108	A C	5C	C7060	B C	2C	IC7007	A C	1C	Q4712	B C	1D
C122	B C	6A	C3005	A C	3C	C4214	B C	7C	C6110	B C	2B	C7061	B C	3C	IC7008	A C	3C	Q4713	B C	1C
C123	A C	6A	C3006	B C	4C	C4215	B C	7C	C6201	B C	3B	C7062	B C	3C	<b>COIL</b>			Q4714	B C	1C
C124	A C	6A	C3007	B C	4B	C4253	B C	7C	C6202	A C	4B	C7063	B C	3C	L101	A C	4B	Q4715	B C	1C
C125	B C	6A	C3008	A C	5D	C4254	B C	7C	C6203	A C	4B	C7064	B C	3C	L501	A C	1A	Q4716	B C	1C
C126	B C	7A	C3009	A C	4D	C4255	A C	6C	C6205	B C	4B	C7065	B C	3C	L1601	A C	6D	Q6101	B C	3B
C127	B C	5A	C3010	B C	4C	C4256	A C	6C	C6210	B C	2B	C7066	B C	3C	L1602	A C	7D	Q6106	A C	5C
C128	B C	6A	C3011	A C	3C	C4257	B C	6C	C6301	B C	3B	C7067	A C	3C	L2001	A C	6C	Q6107	A C	5C
C129	B C	5A	C3012	A C	3C	C4501	A C	7B	C6302	B C	3B	C7068	B C	3C	L2003	A C	6C	Q6201	B C	3B
C131	A C	5A	C3013	A C	3C	C4503	A C	7B	C6303	A C	3B	C7069	B C	3C	L2021	B C	5A	Q6301	B C	3B
C132	B C	5B	C3014	B C	4C	C4504	B C	7B	C6305	B C	3B	C7201	A C	3D	L2051	B C	1C	Q6306	B C	7A
C133	A C	5B	C3015	A C	3C	C4505	B C	7B	C6306	A C	3A	C7202	A C	3D	L2052	B C	1C	Q6307	B C	3D
C134	B C	6B	C3016	B C	4C	C4506	B C	7B	C6307	A C	7A	<b>CONNECTOR</b>			L2071	A C	5A	Q6308	B C	2D
C135	A C	6B	C3017	B C	4C	C4507	B C	7B	C6308	A C	3C	CN1	A C	5A	L2072	A C	5A	Q6401	B C	3A
C136	A C	2A	C3018	B C	4C	C4508	B C	7B	C6310	B C	2B	CN2	A C	2A	L2401	A C	6C	Q6501	B C	4A
C137	A C	1A	C3019	A C	3C	C4509	B C	7B	C6401	B C	3A	CN3	A C	6E	L3002	B C	4C	Q6601	B C	3A
C138	B C	7A	C3020	A C	3C	C4510	B C	7B	C6402	B C	3A	CN4	A C	7A	L3003	B C	4C	Q6606	A C	3A
C140	B C	6B	C3021	B C	4C	C4511	B C	7B	C6403	A C	4A	CN5	A C	4A	L3502	B C	4A	Q6607	A C	3A
C141	B C	7A	C3022	B C	4C	C4512	B C	7B	C6406	A C	1B	CN7	A C	6D	L3503	A C	4B	Q6608	A C	2A
C143	B C	7C	C3023	B C	4C	C4701	A C	1C	C6410	A C	1A	CN8	A C	5A	L4005	A C	5C	Q6621	B C	3B
C144	B C	4D	C3024	B C	4C	C4702	A C	1C	C6501	B C	4A	CN11	A C	3D	L4201	A C	7B	Q6622	B C	3C
C146	A C	4D	C3027	B C	4C	C4703	A C	1C	C6502	B C	4A	CN12	B C	3D	L4501	A C	7B	Q6701	B C	3A
C147	A C	4D	C3028	B C	4C	C4704	A C	5C	C6503	A C	4B	CN13	A C	4D	L4502	A C	7B	Q6702	A C	3A
C1201	A C	4A	C3031	A C	4D	C4705	A C	5D	C6506	B C	2A	CN15	A C	7B	L4701	A C	6C	Q6801	B C	2B
C1202	B C	4B	C3032	A C	4B	C4706	A C	5D	C6510	A C	1A	CN16	A C	2D	L4702	A C	1C	Q6811	B C	2A
C1204	B C	4B	C3033	A C	4B	C4707	B C	1D	C6601	B C	3A	CN18	A C	5D	L5201	B C	5D	Q7001	A C	3C
C1205	B C	5B	C3035	B C	4C	C4708	A C	5C	C6602	B C	3A	CN19	A C	5B	L5202	B C	6E	Q7003	A C	3C
C1206	B C	5B	C3037	A C	4D	C4709	A C	5C	C6603	B C	2A	CN22	A C	6E	L5203	A C	5E	Q7005	A C	3C
C1601	B C	7D	C3506	B C	4A	C4710	B C	1D	C6605	B C	2A	CN25	A C	2A	L6001	B C	2A	Q7007	A C	3D
C1602	A C	7D	C3507	A C	4A	C4711	B C	1C	C6606	A C	3A	CN27	A C	6C	L6002	B C	2A	Q7011	A C	3C
C1603	B C	6D	C3508	A C	4A	C4712	B C	2B	C6607	A C	3A	CN28	B C	1A	L6101	A C	3B	Q7013	A C	3C
C1604	B C	6D	C3509	A C	5D	C4713	A C	2C	C6609	B C	2A	D101	B C	7D	L6106	A C	2B	Q7015	A C	3C
C1605	B C	6D	C3510	A C	4A	C4714	A C	2B	C6610	B C	2B	D102	B C	7A	L6107	B C	2B	Q7017	B C	2C
C1606	A C	7D	C3511	B C	4A	C4715	B C	1C	C6611	B C	3B	D103	B C	7A	L6201	A C	4B	Q7018	B C	2C
C1607	B C	6E	C3512	B C	4A	C4716	B C	1C	C6612	B C	3B	D105	A C	2A	L6301	A C	3B	Q7019	B C	2C
C1608	B C	6E	C3513	A C	5A	C4717	B C	2B	C6622	B C	3A	D106	A C	1A	L6306	A C	3B	Q7020	B C	2C
C1609	B C	7E	C3514	B C	4A	C4718	A C	1C	C6700	B C	3A	D107	A C	2A	L6401	A C	3A	Q7022	A C	2C
C1610	A C	7E	C3515	A C	5A	C4719	A C	1C	C6701	A C	3A	D108	A C	1A	L6501	A C	4A	Q7023	B C	3C
C1611	A C	7E	C3516	A C	5B	C5203	B C	5D	C6702	B C	2A	D109	A C	2A	L6601	A C	3A	Q7201	A C	3D
C1612	B C	7E	C3901	A C	4A	C5204	B C	6D	C6705	A C	2A	D501	A C	1A	L6602	A C	2A	Q7202	A C	3D
C1613	A C	7E	C3902	A C	4A	C5205	B C	6D	C6710	B C	2B	D502	A C	1A	L6606	A C	3A	Q7203	A C	2D
C1614	A C	7E	C3903	A C	4A	C5206	B C	6D	C6711	B C	2B	D503	A C	1A	L6607	A C	3A			
C1615	A C	7D	C4001	A C	6C	C5207	B C	6E	C6802	B C	1B	D601	B C	7D	L6701	B C	3A			
C1616	B C	7D	C4002	B C	6D	C5208	B C	6E	C6805	B C	2A	D602	B C	4B	L7001	A C	3D	<b>RESISTOR</b>		
C1617	B C	7D	C4003	B C	6D	C5209	B C	6E	C6810	A C	2B	D603	B C	3B	L7002	B C	3D	R101	B C	5A
C1618	A C	7D	C4006	A C	5C	C5210	B C	5E	C6812	B C	3A	D4001	A C	6B	L7005	B C	2B	R102	A C	5B
C1619	B C	7D	C4007	B C	6C	C5211	B C	5E	C6815	A C	2A	D4002	A C	6B	L7006	A C	3B	R104	A C	6A
C1620	B C	7D	C4008	B C	6C	C5212	B C	5E	C6820	A C	2B	D501	A C	5E	L7007	A C	3D	R105	B C	7A
C1621	B C	6D	C4009	A C	6C	C5213	B C	6E	C6820	A C	2B	D502	A C	5D	L7008	B C	2C	R106	B C	7A
C1622	A C	7D	C4010	B C	6D	C5214	A C	5D	C7001	A C	4D	D6001	B C	4B	L7009	B C	1C	R107	B C	7A
C1623	A C	7D	C4011	B C	6D	C5215	B C	5D	C7002	A C	4D	D6101	B C	3B	L7010	A C	2C	R108	B C	7A
C1624	A C	7D	C4012	A C	5D	C5216	B C	5D	C7003	B C	4D	D6106	A C	2B	L7012	B C	3C	R109	B C	7A
C1625	A C	7D	C4013	B C	5D	C5218	B C	5E	C7004	B C	4D	D6201	B C	4B				R110	A C	6B
C1626	A C	7D	C4014	B C	5D	C5219	B C	5E	C7005	B C	3D	D6301	B C	3B				R111	A C	6B
C1627	A C	7D	C4015	B C	5D	C5221	A C	6E	C7006	B C	3D	D6401	B C	3A	Q101	B C	6A	R112	A C	6C
C1628	A C	7D	C4016	B C	5D	C5222	A C	5D	C7007	B C	3D	D6501	B C	4A	Q102	B C	7A	R113	B C	2A
C1629	A C	7D	C4017	B C	4D	C5223	A C	5E	C7012	A C	3D	D6601	B C	3A	Q103	A C	6B	R114	B C	3A
C1630	A C	7D	C4018	B C	4C	C5225	B C	5E	C7013	B C	4D	D6611	A C	2A	Q104	B C	3A	R115	B C	2A
C1631	A C	6D	C4019	B C	4C	C5226	B C	5E	C7018	A C										

REF.No.	LOCATION			REF.No.	LOCATION			REF.No.	LOCATION			REF.No.	LOCATION			REF.No.	LOCATION			REF.No.	LOCATION			REF.No.	LOCATION		
R135	B	C	6B	R2022	B	C	5A	R4254	B	C	7C	R6019	B	C	4B	R7032	B	C	2C	R7216	A	C	2C	ZP7-6	A	C	6C
R136	B	C	6B	R2023	B	C	5A	R4255	B	C	7C	R6020	A	C	2B	R7033	B	C	2C	R7217	A	C	2C	ZP7-7	A	C	6C
R137	A	C	6B	R2024	B	C	5A	R4256	B	C	7C	R6103	A	C	3C	R7034	B	C	2C	RA101	B	C	6A	ZP7-8	A	C	6D
R138	A	C	7A	R2025	B	C	5A	R4257	B	C	7C	R6104	A	C	3A	R7035	B	C	2C	RA102	A	C	6B	ZP7-9	B	C	6C
R139	B	C	4C	R2026	B	C	5A	R4258	B	C	6C	R6105	B	C	3C	R7038	B	C	2C	RA103	A	C	6B	ZP8-1	A	C	6A
R140	B	C	6B	R2027	B	C	5A	R4259	B	C	6C	R6106	A	C	5C	R7039	B	C	2C	RA104	A	C	6B	ZP8-2	A	C	5A
R141	B	C	6B	R2028	A	C	4A	R4261	A	C	6C	R6107	A	C	5C	R7040	B	C	2C	RA105	A	C	6B	ZP1-10	A	C	7A
R142	A	C	2A	R2029	B	C	5A	R4262	A	C	7D	R6108	A	C	5C	R7042	B	C	2C	RA106	B	C	6A	ZP12-1	A	C	3C
R143	A	C	6A	R2030	B	C	5A	R4501	B	C	7B	R6109	A	C	6C	R7043	B	C	2C	RA107	B	C	6A	ZP12-3	B	C	3D
R144	A	C	6A	R2031	A	C	5A	R4502	B	C	7B	R6110	A	C	5C	R7044	B	C	2C	RA108	B	C	5A	ZP12-4	B	C	3D
R145	B	C	6A	R2032	A	C	6D	R4503	B	C	7B	R6111	A	C	5C	R7045	B	C	2C	RA109	A	C	4D	ZP12-5	B	C	2C
R146	B	C	6A	R2051	B	C	1B	R4504	B	C	7B	R6203	B	C	4B	R7046	A	C	2C	RA4001	A	C	5C	ZP13-5	B	C	6B
R147	B	C	6A	R2052	B	C	1C	R4505	B	C	7B	R6204	B	C	2B	R7049	A	C	2C	RA4002	A	C	5C	ZP16-7	B	C	6B
R148	B	C	6A	R2071	B	C	5A	R4506	B	C	7B	R6303	B	C	3B	R7050	A	C	2C	RA4003	A	C	5C	ZP18-3	B	C	4B
R149	A	C	5B	R2072	A	C	5A	R4507	B	C	7B	R6304	A	C	3B	R7051	A	C	2C					ZP18-4	B	C	6B
R150	B	C	2A	R2401	B	C	6C	R4508	B	C	7B	R6305	B	C	3B	R7053	A	C	2C					ZP2-10	B	C	6B
R151	B	C	2A	R2402	B	C	6C	R4514	B	C	7B	R6306	A	C	7A	R7054	A	C	2C					ZP2-11	B	C	6B
R152	B	C	5D	R2403	B	C	6C	R4515	B	C	7B	R6307	A	C	7A	R7055	A	C	2C	TP101	A	C	5B	ZP2-12	B	C	4A
R153	B	C	6B	R3001	B	C	4B	R4701	A	C	5D	R6309	B	C	3D	R7056	A	C	2C	TP7001	A	C	3C	ZP2-14	B	C	6A
R158	B	C	6A	R3002	A	C	3C	R4702	A	C	6D	R6310	B	C	3D	R7057	A	C	2C	TP7002	A	C	3C	ZP22-1	A	C	5E
R159	A	C	2C	R3004	A	C	3C	R4703	A	C	6D	R6311	B	C	3D	R7058	A	C	2C	TP7003	A	C	2C	ZP22-2	A	C	5E
R160	A	C	4D	R3006	A	C	3C	R4704	A	C	5D	R6312	B	C	3D	R7061	B	C	3D	TP7005	A	C	2B	ZP22-3	A	C	5D
R161	B	C	4B	R3007	A	C	3C	R4705	A	C	5C	R6403	B	C	3A	R7062	B	C	3D	TP7007	A	C	2C	ZP22-4	A	C	5E
R162	A	C	6A	R3008	B	C	4C	R4706	A	C	5C	R6404	B	C	3A	R7067	B	C	2C	TP7008	A	C	2C	ZP22-5	B	C	5E
R163	A	C	4D	R3009	A	C	6A	R4707	A	C	5D	R6406	A	C	1B	R7068	B	C	2C	TP7009	A	C	2C	ZP22-8	A	C	5E
R164	A	C	5B	R3010	A	C	6A	R4708	B	C	1C	R6407	B	C	3A	R7069	B	C	2C	TP7011	A	C	2C	ZP22-9	B	C	5E
R165	B	C	7C	R3014	B	C	4C	R4709	B	C	1D	R6503	B	C	4A	R7070	B	C	2C					ZP25-5	A	C	1B
R166	B	C	7C	R3015	B	C	4C	R4710	B	C	1C	R6504	B	C	3A	R7071	B	C	2C					ZP27-1	B	C	6C
R167	A	C	7A	R3016	B	C	4C	R4711	A	C	5D	R6506	B	C	2A	R7072	A	C	2C	CB1	A	C	5B	ZP27-2	B	C	6B
R168	A	C	7A	R3017	B	C	4C	R4712	A	C	5C	R6507	B	C	3A	R7073	A	C	2C	F6001	A	C	1A	ZP28-1	B	C	1B
R169	B	C	7A	R3018	B	C	4C	R4713	A	C	5C	R6603	B	C	2A	R7074	B	C	2C	F6002	B	C	3D	ZP28-2	B	C	1B
R170	A	C	7A	R3022	B	C	4C	R4714	A	C	5D	R6604	B	C	2A	R7077	A	C	3D	F6003	B	C	3D	ZP28-3	B	C	1B
R171	B	C	6B	R3023	B	C	4C	R4715	A	C	2D	R6605	B	C	2A	R7078	A	C	3D	FL4701	B	C	2B	ZP28-4	B	C	1A
R172	A	C	4D	R3027	A	C	5B	R4716	B	C	1C	R6606	B	C	2A	R7079	A	C	3D	FL4702	B	C	2C	ZP28-5	B	C	6B
R173	A	C	5B	R3028	A	C	4B	R4717	B	C	1C	R6607	A	C	3A	R7080	A	C	3D	J101	A	D	7C	ZP28-6	B	C	1B
R174	A	C	5B	R3029	A	C	4D	R4718	B	C	1D	R6608	A	C	3A	R7081	A	C	3D	J504	A	D	1C	ZP28-7	B	C	2A
R175	A	C	5B	R3030	A	C	4D	R4719	B	C	1C	R6609	A	C	3A	R7082	A	C	3D	J505	A	D	1D	ZP28-8	B	C	2A
R176	B	C	3A	R3031	A	C	4D	R4720	B	C	1B	R6610	A	C	3A	R7083	A	C	3C	J4001	A	C	4B	ZP28-9	B	C	1A
R177	B	C	4B	R3034	A	C	4D	R4721	B	C	1C	R6611	A	C	3A	R7084	A	C	3C	J4002	A	C	4B	ZP7-10	A	C	6C
R180	A	C	5B	R3038	A	C	3C	R4722	B	C	1B	R6612	A	C	3A	R7085	A	C	3C	JP2001	A	C	6D	ZP7-11	A	C	6B
R182	B	C	5A	R3501	A	C	5D	R4723	B	C	1D	R6613	A	C	2A	R7086	B	C	3C	JP2002	A	C	6C	ZP101-1	A	C	6A
R183	B	C	5A	R3502	A	C	4A	R4724	B	C	2B	R6614	B	C	2B	R7088	B	C	3C	JP2003	A	C	4A	ZP11-14	A	C	3D
R184	B	C	4D	R3504	B	C	5A	R4725	B	C	2B	R6616	A	C	3A	R7089	A	C	3C	JP2004	A	C	5A	ZP13-10	B	C	3B
R188	B	C	6A	R3505	B	C	5A	R4726	A	C	2B	R6621	B	C	3C	R7090	A	C	3C	JP2005	A	C	6D	ZP13-11	B	C	3C
R189	A	C	4B	R3506	A	C	5A	R4727	A	C	1C	R6622	B	C	3B	R7091	B	C	3C	JP3501	A	C	4B	ZP13-12	B	C	3C
R190	A	C	6B	R3507	A	C	4B	R4728	A	C	2B	R6623	B	C	3B	R7093	B	C	3C	PC0508	B	C	4B	ZP16-10	B	C	6B
R191	B	C	6B	R3508	A	C	4A	R4729	B	C	2C	R6624	B	C	3C	R7094	A	C	3C	PC0509	B	C	5B	ZP18-10	B	C	6A
R192	B	C	4D	R3901	A	C	4A	R4730	B	C	2B	R6625	B	C	3B	R7095	A	C	3C	PC0539	A	C	7A	ZP22-10	B	C	5E
R195	B	C	3A	R3902	A	C	4A	R4731	A	C	2B	R6626	B	C	3B	R7096	B	C	3C	PC0559	A	C	7A	ZP22-11	B	C	5E
R196	B	C	4D	R3903	A	C	4A	R4732	A	C	1B	R6627	B	C	3B	R7098	B	C	3C	PC0573	A	C	4A	ZP22-12	B	C	5E
R504	A	C	1A	R4001	B	C	6C	R4733	A	C	2C	R6701	A	C	3A	R7099	A	C	3D	PC0586	B	C	6D	ZP22-13	A	C	5E
R505	A	C	1A	R4002	B	C	6C	R4734	B	C	2C	R6702	B	C	4A	R7100	A	C	3D	PC0588	B	C	5A	ZP22-14	A	C	5E
R1601	B	C	7D	R4003	B	C	6C	R4735	A	C	1D	R6703	A	C	2A	R7101	A	C	3D	PC0589	B	C	5A	ZP25-14	A	C	4A
R1602	B	C	7D	R4004	B	C	6C	R4736	B	C	1D	R6704	A	C	2A	R7102	B	C	3D	PC0718	A	C	1C	ZP28-10	B	C	1A
R1603	A	C	7D	R4006	B	C	6C	R4737	B	C	1C	R6706	A	C	2A	R7103	B	C	3D	PC0729	A	C	4D	ZP28-11	B	C	2B
R1604	A	C	7D	R4007	B	C	6D	R4738	B	C	1C	R6707	A	C	3A	R7110	A	C	3C	PC0800	B	C	2C	ZP28-12	A	C	1A
R1605	A	C	7E	R4008	B	C	6D	R4739	B	C	1C	R6708	A	C	3A	R7111	A	C	3C	PC0815	B	C	2C	ZP28-13	B	C	1B
R1606	A	C	7E	R4009	B	C	6D	R4741	B	C	1D	R6709	A	C	3A	R7112	A	C	3C	PC0816	A	C	2C	ZP504-1	B	C	1B
R1607	A	C	7D	R4010	B	C	6D	R4742	B	C	1C	R6710	B	C	1B	R7114	B	C	3C	PC0823	B	C	5A	ZP504-2	B	C	1B
R1608	B	C	6E	R4011	B	C	6D	R4743	B	C	1C	R6711	B	C	1B	R7115	A	C	3C	TL1601	A	C	7D	ZP504-3	B	C	1C
R1609	B	C	6E	R4012	B	C	6D	R4744	B	C	1C	R6712	A	C	3A	R7116	A	C	3C	TL1602	A	C	7D	ZP504-4	B	C	1C
R1610	B	C	6E	R4013	B	C	6D	R4745	B	C	1C	R6713	B	C	2B	R7118	B	C	3C	TL1603	A	C	7D	ZP504-5	B	C	1B
R1611	B	C	6E	R4014	B	C	6D	R4746	B	C	1C	R6714	B	C	2B	R7119	A	C	3C	TL1605	A	C	7D	ZP505-1	B	C	1D
R1612	A	C	7D	R4035	B	C	6C	R4747	B	C	1C	R6801	B	C	2A	R7120	A	C	3C	TL1606	A	C	7E	ZP505-2	B	C	1D
R1613	A	C	7E	R4036	B	C	6C	R4748	A	C	6C	R6803	B	C	2A	R7122	B	C	3C	TM1	A	C	1A	ZP505-3	B	C	1C
R1614	A	C	7E	R4037	B	C	6B</																				





4

5

6

7